

**FREE TO TRADE**

Please complete the grower sales declaration form available from the Pacific Seeds website.



## VARIETY ATTRIBUTES

A quick-mid Spring maturity for main season planting like Spitfire. 11% yield increase over LRPB Spitfire while maintaining similar protein accumulation.

Large grain, high protein and low screenings make LRPB Hellfire a standout grain package.

Premium quality profile with APH classification in NSW and Qld.

Solid disease package suitable for all main season growing areas in NSW and Qld.

Medium plant height and good standability.

### DISEASE RESISTANCE

Stem Rust	MR
Leaf Rust	MSS
Stripe Rust East	MR
Yellow Spot	MSS
Septoria Tritici	S
Crown Rot	MSS
Prat.thornei (Res)	MSS
Prat.thornei (Tol)	MI
Prat.neglectus (Res)	MSS
Prat.neglectus (Tol)	MTMI
Black Point	S

## AGRONOMIC BACKGROUND

LRPB Hellfire is a quick-mid spring maturing APH wheat with excellent yield performance and high protein accumulation. Quality testing during development in both the LongReach program and the NVT system has shown that LRPB Hellfire consistently produces protein levels similar to that of Spitfire, with high yields.

This feature makes LRPB Hellfire an important tool for growers looking to take advantage of stack averaging marketing opportunities, such as GrainCorp’s Croptimise program, without sacrificing yield across the cropping program.

LRPB Hellfire shows excellent early vigour, solid resistance to stem and stripe rusts and good yield performance under the added stress of crown rot.

Longreach disease ratings have been compiled from LongReach disease screening data and from NVT disease ratings March 2024. Resistance ratings: VS=Very susceptible, S=Susceptible, MS=Moderately susceptible, MR=Moderately resistant, R=Resistant. Tolerance ratings: T=Tolerant, MT=Moderately tolerant, MI=Moderately intolerant, I=Intolerant, VI=Very intolerant. p=Preliminary data based on limited data set. #=may be more susceptible to alternative pathotypes.

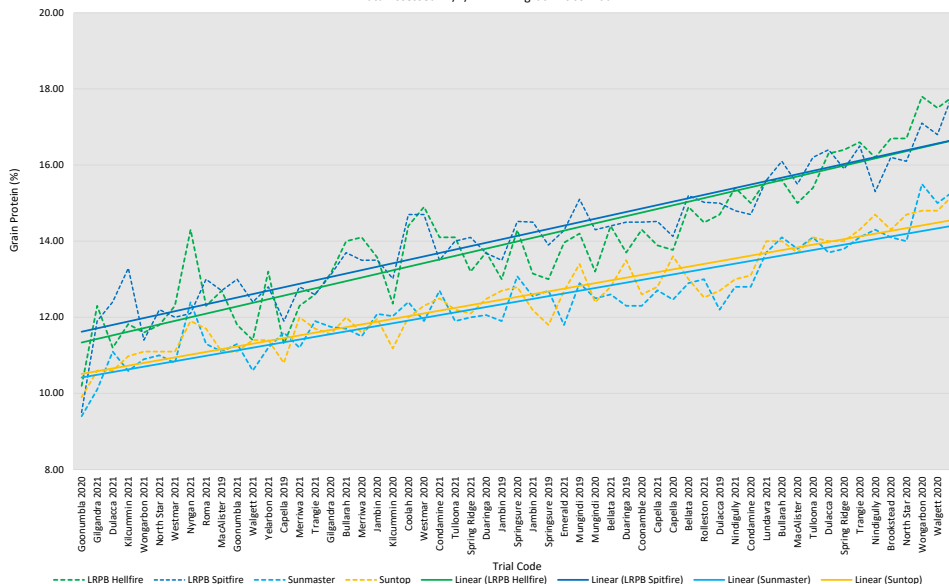
# LONGREACH HELLFIRE

## YIELD PERFORMANCE

NVT main season MET analysis 2017-2021 (% predicted regional mean yield)								
Variety	Maturity	Central QLD	SW QLD	SE QLD	NE NSW	NW NSW	SE NSW	SW NSW
Coolah	Mid Spring	104.1	100.2	97.7	104.1	103.3	100.1	99.3
LRPB Flanker	Mid Spring	99.3	98.3	93.7	98.4	98.9	96.5	94.5
LRPB Hellfire	Quick-Mid Spring	103.2	100.9	102.9	100.3	100.8	92.5	96.9
LRPB Mustang	Quick Spring	96.7	103.1	104.7	102.0	102.6	97.8	98.0
LRPB Raider	Slow Spring	97.1	106.0	96.1	103.6	103.8	97.4	100.3
LRPB Reliant	Mid Spring	100.6	105.5	101.5	101.6	103.4	89.3	92.3
LRPB Spitfire	Quick-Mid Spring	95.8	91.1	96.9	92.9	90.9	87.8	94.0
Sunchaser	Mid Spring	101.8	103.0	104.3	99.0	99.8	96.3	95.4
Sunmaster	Mid Spring	107.4	109.4	108.4	108.5	109.5	106.4	107.5
Sunprime	Quick Spring	100.3	102.0	104.5	101.4	102.0	94.5	96.9
Suntop	Mid Spring	100.8	103.1	103.3	101.4	101.3	98.1	100.0
Average predicted yield (t/ha)		3.01	2.58	2.63	3.70	3.40	4.38	4.63
Trials included in analysis		22	28	6	22	26	22	32

Reported Grain Protein Northern NSW/QLD Main Season NVT Sites 2019-2021  
(61 Trials Ranked on Average Site Protein)

Data Accessed 17/2/22 - www.grdc-nvt.com.au



LRPB Hellfire is available through our Associate Network for contact information please go to [www.pacificseeds.com.au](http://www.pacificseeds.com.au)

### PLANT BREEDERS RIGHTS

LongReach Hellfire is protected by Plant Breeders Rights (PBR). In regard to propagating material (planting seed) of this variety, any unauthorised commercial production or reproduction, conditioning for propagation, offering for sale, sale, import, export or stocking of propagating material is an infringement under the *Plant Breeders Rights Act 1994*. Grower to grower trading of seed of LongReach Hellfire is allowed.

End Point Royalty (EPR) Each time a grower purchases seed of LongReach Hellfire the grower agrees to comply with the Variety Licence and Royalty Agreement, including agreement to pay the EPR of \$4.25 per tonne (GST excl). EPR is payable on all grain production, except on seed retained by the grower for replanting by the grower. The majority of the EPR will be paid by Advanta Seeds to the Breeder (LongReach Plant Breeders) for investment in future wheat breeding programs.

The information provided in this publication is intended as a guide only. Advanta Seeds Pty Ltd (including its officers, employees, contractors and agents) ('Advanta Seeds') can not guarantee that every statement is without flaw of any kind. While Advanta Seeds has taken all due care to ensure that the information provided is accurate at the time of publication, various factors, including planting times and environmental conditions may alter the characteristics and performance from plants. Advanta Seeds shall not be liable for any errors or omissions in the information or for any loss, injury, damage or other consequence whatsoever that you or any person might incur as a result of your use of or reliance upon the products (whether Advanta Seeds products or otherwise) and information which appear in this publication. To the maximum extent permitted by law, the liability of Advanta Seeds for any claim whatsoever arising out of the supply or use of or reliance upon the products and information in this publication (including liability for breach of any condition or warranty implied by the Trade Practices Act 1974 or any other law) is limited at its discretion, to the replacement of the products, the supply of equivalent products or the resupply of the publication. For application to specific conditions, seek further advice from a local professional. © Advanta Seeds 2024.