



South Australia & Victoria



LPB11-1728

“The Short AH Wheat that shoots for yield with less straw”

- A high yielding AH variety suited to South Australia and Victoria.
- Short canopy for easier management is the standout feature.
- Upside yield with stability for good and bad years similar to Mace and good grain package with low screenings.
- Mid maturity that is 3-4 days later than Mace (between Mace and Trojan).
- Good YLS (MRMS) for rotation flexibility. Solid Stem Rust (MRMS) resistance; base level of resistance to Stripe Rust (MSS) and susceptible to Leaf Rust (S).

AGRONOMIC FEATURES

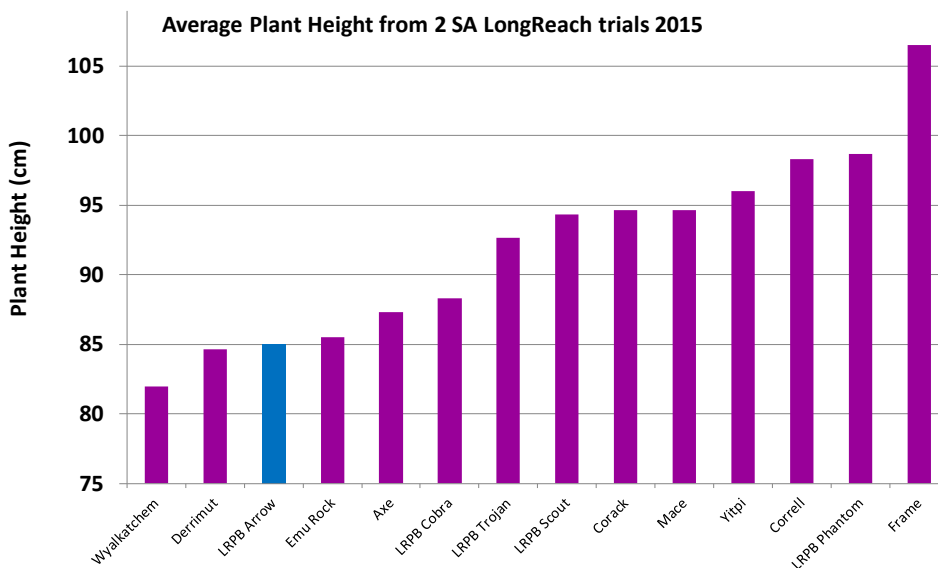
Arrow has performed very well in main season LongReach (2011-2015) and NVT (2015) trials with similar yield and yield stability to Mace. Arrow is AH quality in SA and Victoria. The variety has a large grain size and has shown to be robust for screenings, even in the tight 2015 finish when it had lower screenings than Mace. Test weights have been similar to reliable lines such as Corack and Mace. Sprouting tolerance is an improvement over Wyalkatchem and looks similar to Trojan, while Black Point tolerance is good (MRMS).

Arrow is suitable for wheat on wheat rotation phase with very good Yellow Leaf Spot resistance (MRMS). Arrow is susceptible to Stripe rust (MSS) and will require some form of chemical protection to maximise performance, especially in the cooler winter period. It has solid resistance to Stem Rust (MRMS) but susceptible to Leaf Rust (S).

DISEASE AND PEST RATINGS

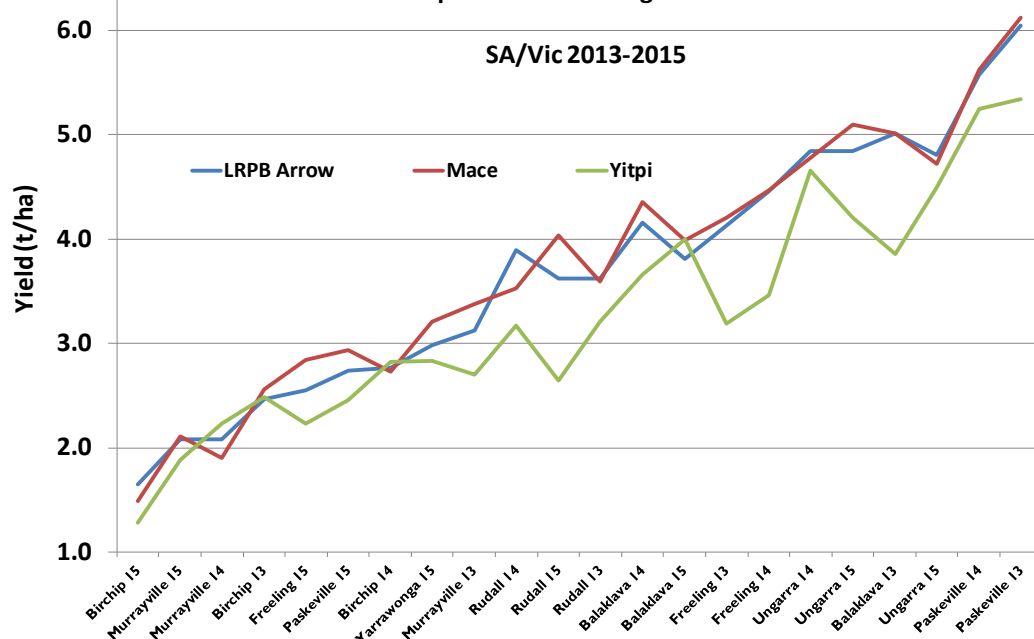
Variety	Stem Rust	Leaf Rust	Stripe Rust Yr17+27+	Yellow Spot	Septoria tritici SA	Crown Rot	Prat. thornei Tol.	CCN Res	Black Point
LRPB Arrow	MRMS	S	MSS	MRMS	S	MSSp	MT-MIp	S	MRMS

Resistance rating: VS=Very Susceptible, S=Susceptible, MS=Moderately Susceptible, MR=Moderately Resistant, R=Resistant.
 Tol Rating - T =Tolerant, MT=Moderately Tolerant, MI =Moderately Intolerant, I = Intolerant, VI =Very Intolerant. Data sourced NVT and LongReachPlant Breeders 2016. p = Preliminary Data Based on limited data set



Arrow shows medium vigour and a good tillering ability that fills space laterally early in the season, with a compact plant type that is comparable to Cobra in plant structure. Arrow is mid-maturity with heading time being between Mace and Trojan. At maturity Arrow is similar height to Wyalkatchem. The canopy structure suits direct drilling and stubble retention systems.

Yield comparison for 22 LongReach Elite trials



2015 NVT trial results for South Australia and Victoria

State	SA						VIC				
Region Sites	Murray Mallee 5 Sites	Upper EP 7 Sites	Mid North 4 Sites	Sth East 3 Sites	Yorke Pen 3 Sites	Lower EP 4 Sites	Wimmera 3 Sites	Nth Central 2 Sites	Mallee 7 Sites	Nth East 3 Sites	Nth East Irr 1 Site
Variety	t/ha	t/ha	t/ha	t/ha	t/ha	t/ha	t/ha	t/ha	t/ha	t/ha	t/ha
LRPB Arrow	1.71	1.87	3.08	3.20	3.34	3.82	1.56	1.55	1.73	2.69	7.85
Scepter	1.77	1.90	3.20	3.46	3.38	4.07	1.74	1.68	1.89	2.86	7.61
Corack	1.72	1.84	3.38	3.50	3.49	4.22	1.47	1.51	1.78	2.81	7.40
Mace	1.66	1.86	3.14	3.41	3.28	4.01	1.47	1.59	1.68	2.85	7.15
LRPB Trojan	1.79	1.75	2.90	3.06	3.10	3.66	1.27	1.40	1.69	2.74	6.86
LRPB Cobra	1.44	1.76	2.95	3.39	3.09	3.74	0.85	1.28	1.61	2.67	7.56
LRPB Scout	1.54	1.59	2.85	3.11	2.96	3.59	1.32	1.42	1.73	2.59	7.51
Yitpi	1.60	1.58	2.54	2.55	2.74	3.08	1.06	1.45	1.58	2.40	
Region Mean (t/ha)	1.61	1.74	2.91	2.99	3.06	3.65	1.29	1.44	1.69	2.58	7.16

Victoria / New South Wales

Baker Seed Co
Rutherglen, VIC
Ph: 02 6032 9484

AGF Seeds
Smeaton, VIC
Ph: 03 5345 6262

The Wimmera Grain Co
Rupanyup, VIC
Ph: 03 5385 5344

Superior Seed Co
Deniliquin, NSW
Ph: 03 5881 6689

South Australia

Manoora Seeds
Manoora, SA
Ph: 08 8848 4335

Modra Seeds
Ungarra, SA
Ph: 08 8688 8094

Colrae Seeds
Callington, SA
Ph: 08 8538 5017

RH Verner & Co
Mallala, SA
Ph: 0429 202 182

AG Schilling & Co
Kadina, SA
Ph: 0408 859 308



PLANT BREEDERS RIGHTS

LongReach Arrow is protected by Plant Breeders Rights (PBR). In regard to propagating material (planting seed) of this variety, any unauthorised commercial production or reproduction, conditioning for propagation, offering for sale, sale, import, export or stocking of propagating material is an infringement under the Plant Breeders Rights Act 1994. No grower to grower trading of seed of LongReach Arrow is allowed.

End Point Royalty (EPR)

Each time a grower purchases seed of LongReach Arrow the grower agrees to comply with the Variety Licence and Royalty Agreement, including agreement to pay the EPR of \$3.00 per tonne (GST Excl). EPR is payable on all grain production, except on seed retained by the grower for replanting by the grower. The majority of the EPR will be paid by Advanta Seeds to the Breeder (LongReach Plant Breeders) for investment in future wheat breeding programs.

The information provided in this publication is intended as a guide only. Advanta Seeds Pty Ltd (including its officers, employees, contractors and agents) ('Advanta Seeds') can not guarantee that every statement is without flaw of any kind. While Advanta Seeds has taken all due care to ensure that the information provided is accurate at the time of publication, various factors, including planting times and environmental conditions may alter the characteristics and performance from plants.

Advanta Seeds shall not be liable for any errors or omissions in the information or for any loss, injury, damage or other consequence whatsoever that you or any person might incur as a result of your use of or reliance upon the products (whether Advanta Seeds products or otherwise) and information which appear in this publication. To the maximum extent permitted by law, the liability of Advanta Seeds for any claim whatsoever arising out of the supply or use of or reliance upon the products and information in this publication (including liability for breach of any condition or warranty implied by the Trade Practices Act 1974 or any other law) is limited at its discretion, to the replacement of the products, the supply of equivalent products or the resupply of the publication. For application to specific conditions, seek further advice from a local professional.

© Advanta Seeds 2016.