

VARIETY ATTRIBUTES

Slow-Spring maturing variety suitable for late April to Early May planting

High and stable yielding variety with APH classification in NSW/Qld and premium grain package

Excellent Crown Rot resistance MRMS(p) making LRPB Stealth a class above most APH varieties available in the market

Solid disease package suitable for all growing areas in NSW and Qld

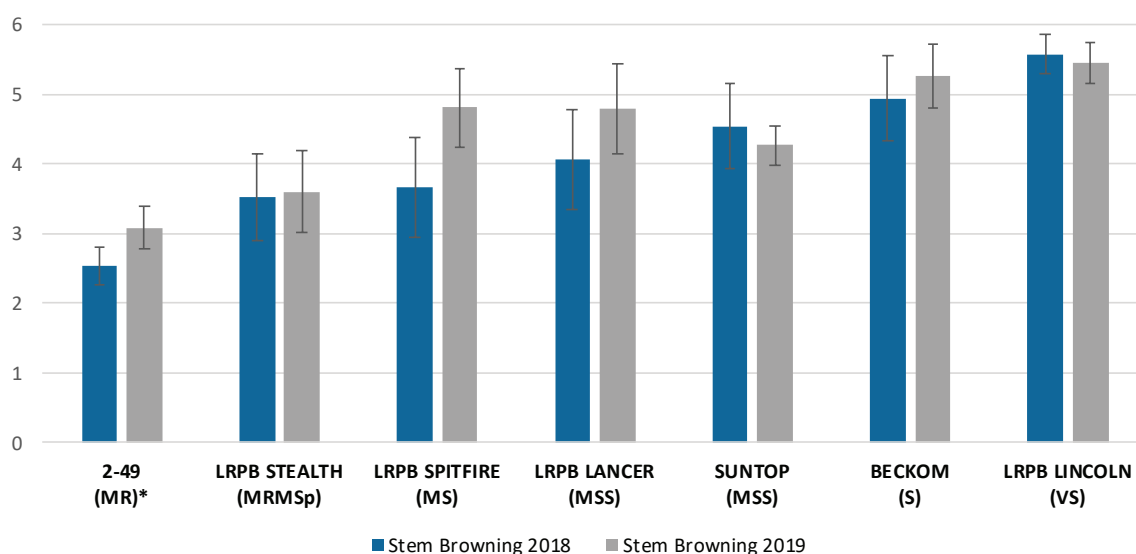
Stealth is medium plant height with a similar growth and yield accumulation pattern to Lancer

DISEASE RESISTANCE

| | | |
|------------------|-----|----------|
| Stem Rust | | Rp |
| Leaf Rust | | RMR/SVSp |
| Stripe Rust East | | RMRp |
| Yellow Spot | | MSp |
| Septoria tritici | | MSp |
| Crown Rot | | MRMSp |
| Prat.thornei | Res | - |
| Prat.thornei | Tol | MTp |
| Prat.neglectus | Res | - |
| Prat.neglectus | Tol | - |
| Black Point | | MRMSp |

Resistance ratings: VS = Very Susceptible
S = Susceptible, MS=Moderately Susceptible
MR = Moderately Resistant, R = Resistant
Tol Rating - T = Tolerant, MT = Moderately Tolerant
MI = Moderately Intolerant, I = Intolerant
Data sourced NVT and LongReach Plant Breeders Feb 2020. p = Preliminary Data Based on limited data set.
Leaf Rust - varieties with a second rating separated by a / show the reaction to the LR_24 pathotype if it is present.

LRPB / Sydney University Crown Rot Nursery 2018 - 19
Stem Browning Rating at Maturity (0 = No Browning, 9 = Heavy Browning)

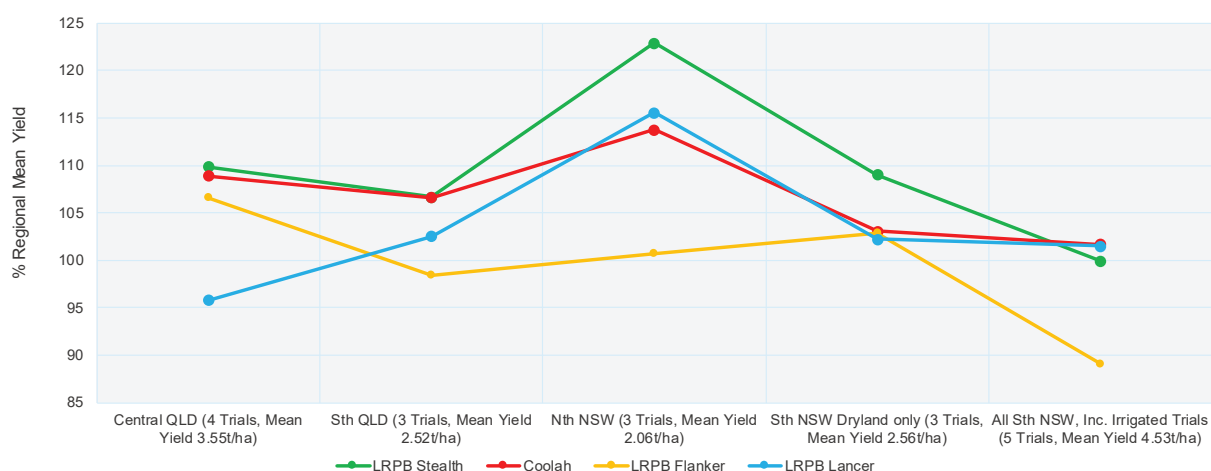


*2-49 is a public breeding line that has been shown to display high levels of Crown Rot Resistance

LRPB Stealth is the result of a targeted cross to increase Crown Rot Resistance in widely grown APH germplasm. LRPB Stealth has shown increased levels of Crown Rot resistance over well regarded varieties currently available on the market across multiple years when assessed in disease nurseries.

YIELD PERFORMANCE

% Regional Mean Yield 2019 Early Season NVT Trials



While the 2019 Early Season NVT system produced a relatively small amount of yield data across NSW and QLD, LRPB Stealth demonstrated similar relative yield performance in these trials as has been seen in LongReach breeding trials across the East coast since 2015

PB Agrifood
Toowoomba, QLD
Ph: 07 4633 5555

Woods Seeds Pty Ltd
Goondiwindi, QLD
Ph: 07 4670 0400

Galleon Grains Pty Ltd
Springsure, QLD
Ph: 07 4984 6141

Associated Grain
Dalby, QLD
Ph: 07 4669 9500

Hart Bros. Seeds
Juncie, NSW
Ph: 02 6924 7206

Baker Seed Company
Rutherglen, VIC
Ph: 02 6032 9484



PLANT BREEDERS RIGHTS

LongReach Stealth is protected by Plant Breeders Rights (PBR). In regard to propagating material (planting seed) of this variety, any unauthorised commercial production or reproduction, conditioning for propagation, offering for sale, sale, import, export or stocking of propagating material is an infringement under the Plant Breeders Rights Act 1994. No grower to grower trading of seed of LongReach Stealth is allowed.

End Point Royalty (EPR)

Each time a grower purchases seed of LongReach Stealth the grower agrees to comply with the Variety Licence and Royalty Agreement, including agreement to pay the EPR of \$4.25 per tonne (GST excl). EPR is payable on all grain production, except on seed retained by the grower for replanting by the grower. The majority of the EPR will be paid by Advanta Seeds to the Breeder (LongReach Plant Breeders) for investment in future wheat breeding programs.

The information provided in this publication is intended as a guide only. Advanta Seeds Pty Ltd (including its officers, employees, contractors and agents) (Advanta Seeds) can not guarantee that every statement is without flaw of any kind. While Advanta Seeds has taken all due care to ensure that the information provided is accurate at the time of publication, various factors, including planting times and environmental conditions may alter the characteristics and performance from plants. Advanta Seeds shall not be liable for any errors or omissions in the information or for any loss, injury, damage or other consequence whatsoever that you or any person might incur as a result of your use of or reliance upon the products (whether Advanta Seeds products or otherwise) and information which appear in this publication. To the maximum extent permitted by law, the liability of Advanta Seeds for any claim whatsoever arising out of the supply or use of or reliance upon the products and information in this publication (including liability for breach of any condition or warranty implied by the Trade Practices Act 1974 or any other law) is limited at its discretion, to the replacement of the products, the supply of equivalent products or the resupply of the publication. For application to specific conditions, seek further advice from a local professional.
© Advanta Seeds 2020.