

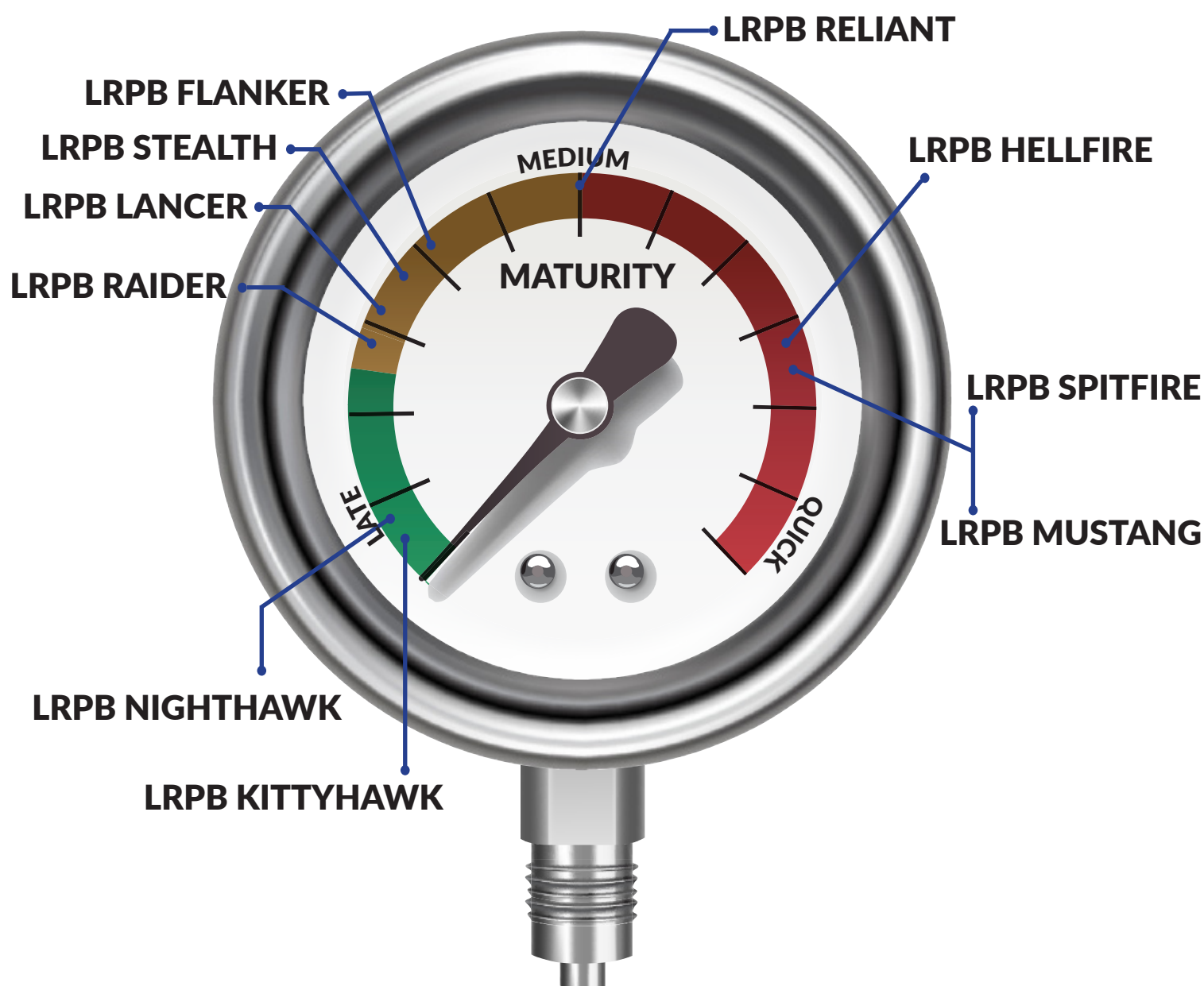
# VARIETY GUIDE QUEENSLAND & NEW SOUTH WALES

WHEAT & OATS

# GAUGE WHAT YOU NEED FROM PACIFIC SEEDS WHEAT

The Pacific Seeds range of wheats for New South Wales (NSW) and Queensland (Qld) have been bred to encompass the full range of maturities for both states to give growers choice in their program while still providing the quality and agronomic package needed for success.

From dual purpose winter type Kittyhawk (most suited to southern NSW), to quicker maturing Hellfire and Mustang, the Pacific Seeds wheat range has been bred to achieve APH quality in your paddock.



# Delivering wheat solutions that consider your local conditions

Pacific Seeds is committed to producing wheat varieties that put more money in the pocket of Australian wheat growers. A wide range of options delivers choice when it comes to growers identifying the variety that best suits their needs.

Our wheat varieties are recognised for their excellent quality and grain size. Many of these products are used by millers to produce bread, biscuits and noodles for the Australian and international markets.

Whether you are looking for early or late planting options, reliability in tough conditions or exceptional protein accumulation, we have a wheat variety that will meet your local environmental conditions and long-term business goals.



# RAIDER

LPB16-3538

Queensland and New South Wales  
A new variety from Pacific Seeds

## VARIETY ATTRIBUTES

A Slow-Spring maturing variety suitable for Early to Mid season planting throughout NSW and QLD

High yielding variety showing stable performance across a wider sowing window

Secure disease and grain package suitable for all production environments across NSW and QLD

Moderate canopy for crop management with good standability

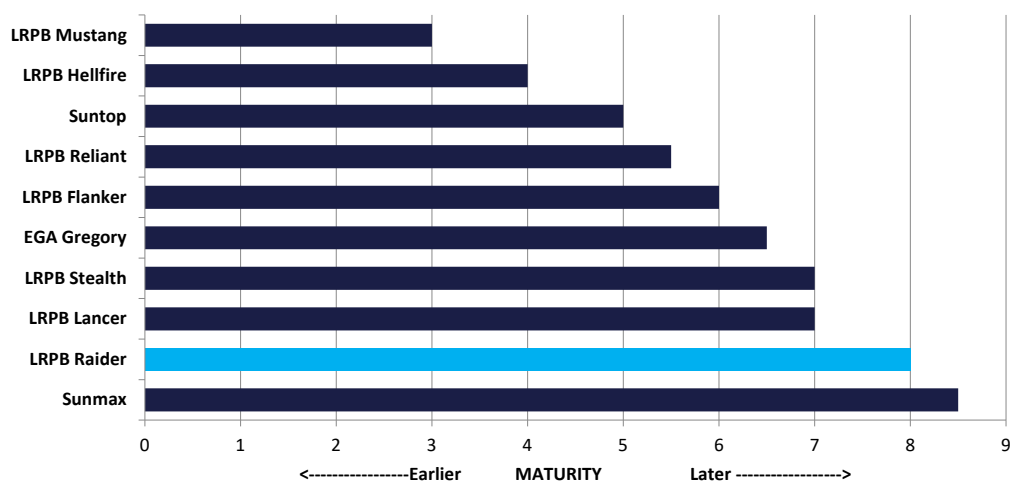
APH classification throughout NSW and QLD

### DISEASE RESISTANCE

Stem Rust	R	
Leaf Rust	R#	
Stripe Rust East	RMR	
Yellow Spot	MSS	
Septoria tritici	MSS	
Crown Rot	MSp *	
Prat.thornei	Res	-
Prat.thornei	Tol	MT
Prat.neglectus	Res	-
Prat.neglectus	Tol	-
Black Point	MSSp	

Resistance ratings: VS=Very Susceptible, S=Susceptible  
MS=Moderately Susceptible, MR=Moderately Resistant  
R =Resistant. Tol Rating - T=Tolerant, MT=Moderately Tolerant  
MI=Moderately Intolerant, I=Intolerant, VI=Very Intolerant.  
Varieties with # indicate susceptibility to pathotype variant.  
Ratings with \* indicate sourced from LRPB Disease Nurseries results. Data sourced via NVT ([www.nvtonline.com.au](http://www.nvtonline.com.au)) and LRPB Disease Screening Results Feb 2022. p=Preliminary Data  
Based on limited data set

### Wheat Maturity - NSW/Qld Selected APH Varieties



LRPB Raider is a LRPB Lancer/LRPB Reliant cross that was made in an effort to produce a shorter height LRPB Reliant type with an improved disease profile and increased tillering.

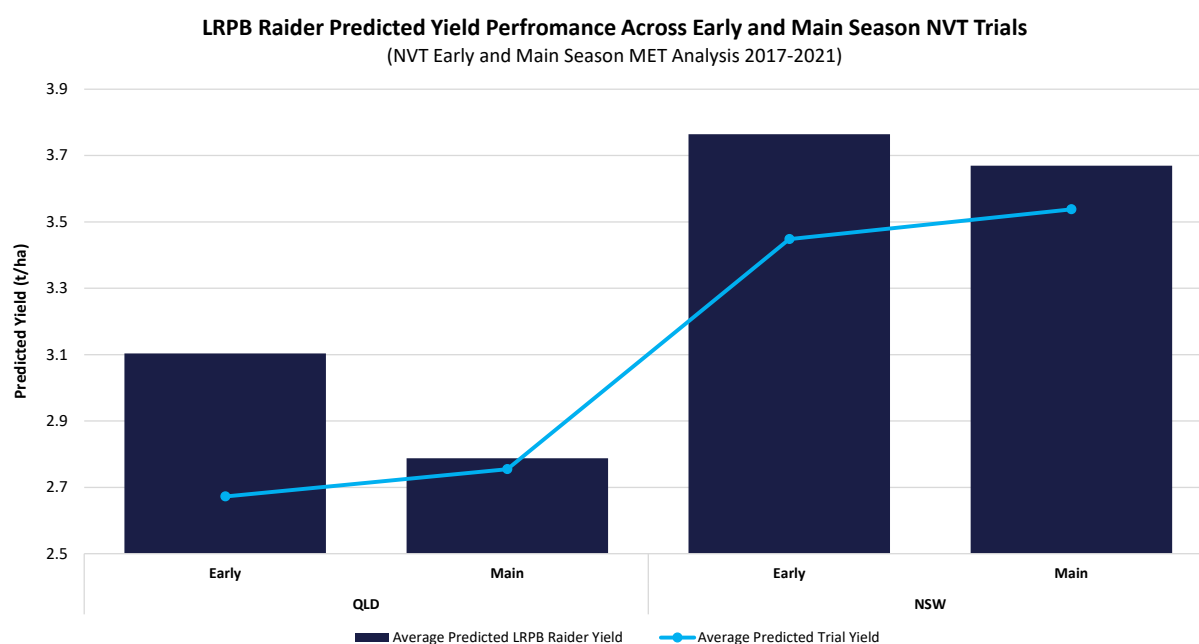
The result is a slow spring variety with the ability to quicken in cooler environments and seasons, while retaining LRPB Lancer's high tillering growth style and LRPB Reliant's ability to finish the season off fast. These attributes help give LRPB Raider greater flexibility in its sowing window without compromising on relative yield performance.



# YIELD PERFORMANCE

NVT Early Season MET Analysis 2017-2021 (% Predicted Regional Mean Yield)								
Variety	Maturity	CQ	SW QLD	SE QLD	NE NSW	NW NSW	SE NSW	SW NSW
LRPB Raider	Slow Spring	117.7	115.4	113.2	107.9	110.4	99.1	100.2
Coolah	Mid Spring	117.5	112.2	111.3	107.3	109.8	99.3	101.1
Sunflex	Slow Spring	115.8	109.0	109.5	108.5	110.4	107.0	105.7
LRPB Flanker	Mid Spring	114.7	107.3	101.0	99.7	100.5	92.3	94.0
LRPB Stealth	Mid Spring	114.6	109.3	108.2	104.8	107.0	95.9	99.7
EGA Gregory	Mid Spring	107.4	106.5	100.9	98.6	98.9	88.5	91.0
LRPB Lancer	Mid Spring	106.2	100.1	101.2	99.8	101.2	94.2	99.6
Average PredictedYield (t/ha)		2.69	2.68	2.60	3.77	3.19	4.71	5.23
Trials in Analysis		23	27	6	18	22	21	25

While LRPB Raiders maturity indicates it should produce optimum yield performance in early sown trials, the variety has demonstrated excellent yields across a range of sowing times and environments, producing consistent and competitive yields across trial sites even when planted later than ideal for the variety.



LongReach Raider being harvested at Billa Billa (Oct 2021)

# STEALTH

LPB15-2757

## VARIETY ATTRIBUTES

Slow-Spring maturing variety suitable for late April to early May planting

A high and stable yielding variety with APH classification in NSW/Qld and premium grain package

Excellent Crown Rot resistance MRMS(p) making LRPB Stealth a class above most APH varieties available in the market

Solid disease package suitable for all growing areas in NSW and Qld

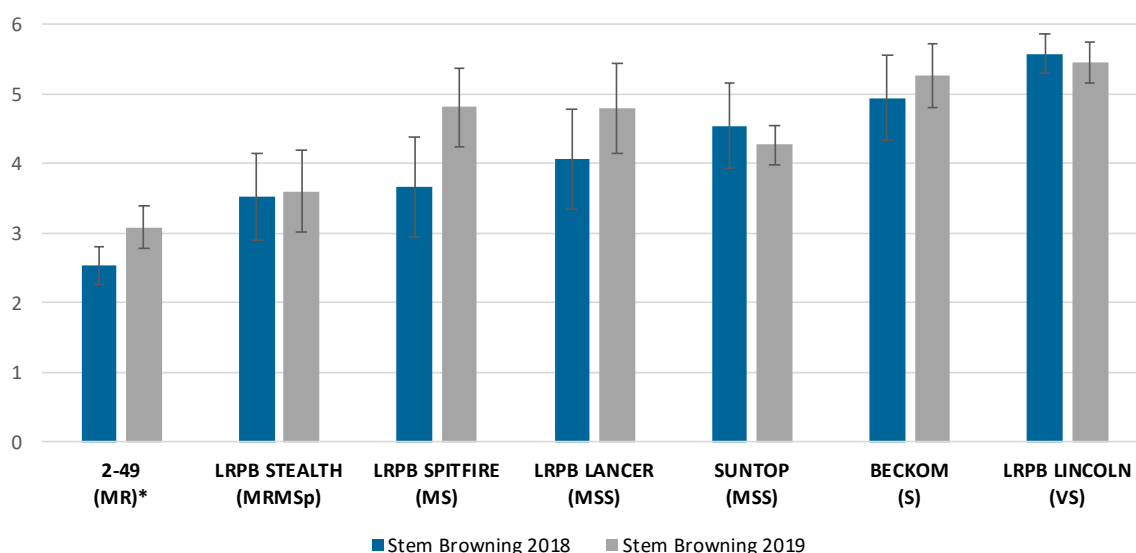
LRPB Stealth is medium plant height with a similar growth and yield accumulation pattern to Lancer

Queensland and New South Wales  
A new variety from Pacific Seeds

DISEASE RESISTANCE		
Stem Rust		R
Leaf Rust		RMR#
Stripe Rust East		RMR
Yellow Spot		MS
Septoria tritici		MS
Crown Rot		MRMSp *
Prat.thornei	Res	S
Prat.thornei	Tol	MTMI
Prat.neglectus	Res	MS
Prat.neglectus	Tol	MI
Black Point		MRMSp

Resistance ratings: VS=Very Susceptible, S=Susceptible  
MS=Moderately Susceptible, MR=Moderately Resistant  
R =Resistant. Tol Rating - T=Tolerant, MT=Moderately Tolerant  
MI=Moderately Intolerant, I=Intolerant, VI=Very Intolerant.  
Varieties with # indicate susceptibility to pathotype variant.  
Ratings with \* indicate sourced from LRPB Disease Nurseries results. Data sourced via NVT ([www.nvtonline.com.au](http://www.nvtonline.com.au)) and LRPB Disease Screening Results Feb 2022. p=Preliminary Data Based on limited data set

**LRPB / Sydney University Crown Rot Nursery 2018 - 19**  
**Stem Browning Rating at Maturity (0 = No Browning, 9 = Heavy Browning)**



\*2-49 is a public breeding line that has been shown to display high levels of Crown Rot resistance

LRPB Stealth is the result of a targeted cross to increase Crown Rot resistance in widely grown APH germplasm. LRPB Stealth has shown increased levels of Crown Rot resistance over well regarded varieties currently available on the market across multiple years when assessed in disease nurseries.



# YIELD PERFORMANCE

NVT Early Season MET Analysis 2017-2021 (% Predicted Regional Mean Yield)								
Variety	Maturity	Central QLD	SW QLD	SE QLD	NE NSW	NW NSW	SE NSW	SW NSW
Sunflex	Slow Spring	115.8	109.0	109.5	108.5	110.4	107.0	105.7
LRPB Flanker	Mid Spring	114.7	107.3	101.0	99.7	100.5	92.3	94.0
<b>LRPB Stealth</b>	<b>Mid Spring</b>	<b>114.6</b>	<b>109.3</b>	<b>108.2</b>	<b>104.8</b>	<b>107.0</b>	<b>95.9</b>	<b>99.7</b>
EGA Gregory	Mid Spring	107.4	106.5	100.9	98.6	98.9	88.5	91.0
LRPB Lancer	Mid Spring	106.2	100.1	101.2	99.8	101.2	94.2	99.6
Predicted Mean Yield (t/ha)		2.69	2.68	2.60	3.77	3.19	4.71	5.23
Trials included in Analysis		23	27	6	18	22	21	25



Matt Watt - Grower and Farm Consultant Baker Ag Advantage Trundle District  
 "Lancer is the main variety of wheat we grow and is the benchmark in the district so I don't think we can go wrong by adding Stealth to our program. With its good disease resistance package and yielding the same as Lancer it just gives us another string to our bow."

## VARIETY ATTRIBUTES

Quick-Mid Spring maturity for main season planting like Spitfire

Premium quality profile with APH classification in NSW and Qld

11% yield increase over LRPB Spitfire while maintaining similar protein accumulation

Large grain, high protein and low screenings make LRPB Hellfire a standout grain package

Solid disease package suitable for all main season growing areas in NSW and Qld

Medium plant height and good standability

### DISEASE RESISTANCE

Stem Rust		MR
Leaf Rust		MSS
Stripe Rust East		MR
Yellow Spot		MSS
Septoria tritici		S
Crown Rot		MSS
Prat.thornei	Res	MSS
Prat.thornei	Tol	MII
Prat.neglectus	Res	MSS
Prat.neglectus	Tol	TMT
Black Point		MSS

S=Moderately Susceptible, MR=Moderately Resistant  
 R =Resistant. Tol Rating - T=Tolerant, MT=Moderately Tolerant  
 MI=Moderately Intolerant, I=Intolerant, VI=Very Intolerant.  
 Varieties with # indicate susceptibility to pathotype variant.  
 Ratings with \* indicate sourced from LRPB Disease Nurseries results. Data sourced via NVT ([www.nvtonline.com.au](http://www.nvtonline.com.au)) and LRPB Disease Screening Results Feb 2022. p=Preliminary Data  
 Based on limited data set

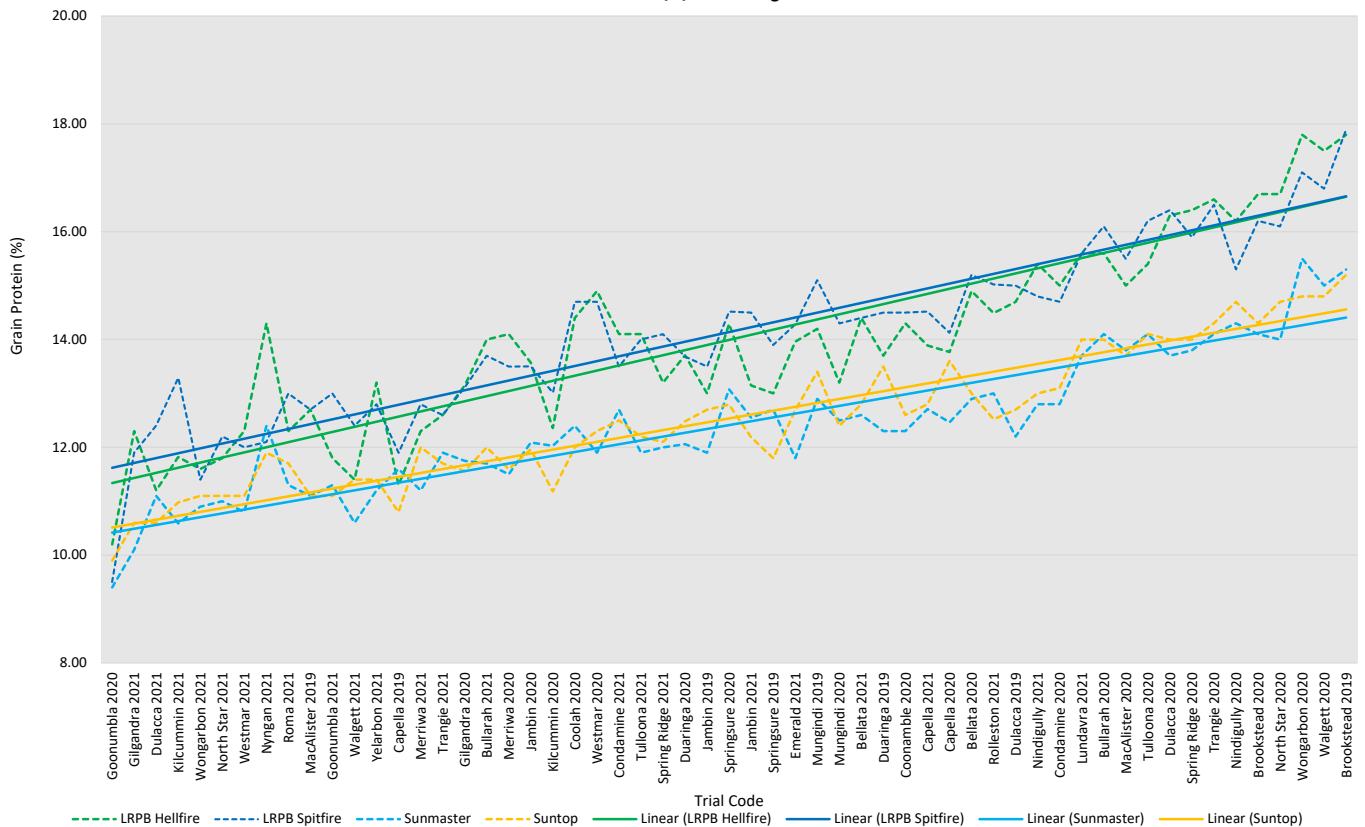
## YIELD PERFORMANCE

NVT Main Season MET Analysis 2017-2021 (% Predicted Regional Mean Yield)

Variety	Maturity	Central QLD	SW QLD	SE QLD	NE NSW	NW NSW	SE NSW	SW NSW
Coolah	Mid Spring	104.1	100.2	97.7	104.1	103.3	100.1	99.3
LRPB Flanker	Mid Spring	99.3	98.3	93.7	98.4	98.9	96.5	94.5
<b>LRPB Hellfire</b>	<b>Quick-Mid Spring</b>	<b>103.2</b>	<b>100.9</b>	<b>102.9</b>	<b>100.3</b>	<b>100.8</b>	<b>92.5</b>	<b>96.9</b>
LRPB Mustang	Quick Spring	96.7	103.1	104.7	102.0	102.6	97.8	98.0
LRPB Raider	Slow Spring	97.1	106.0	96.1	103.6	103.8	97.4	100.3
LRPB Reliant	Mid Spring	100.6	105.5	101.5	101.6	103.4	89.3	92.3
LRPB Spitfire	Quick-Mid Spring	95.8	91.1	96.9	92.9	90.9	87.8	94.0
Sunchaser	Mid Spring	101.8	103.0	104.3	99.0	99.8	96.3	95.4
Sunmaster	Mid Spring	107.4	109.4	108.4	108.5	109.5	106.4	107.5
Sunprime	Quick Spring	100.3	102.0	104.5	101.4	102.0	94.5	96.9
Suntop	Mid Spring	100.8	103.1	103.3	101.4	101.3	98.1	100.0
Average Predicted Yield (t/ha)		3.01	2.58	2.63	3.70	3.40	4.38	4.63
Trials included in Analysis		22	28	6	22	26	22	32



Reported Grain Protein Northern NSW/QLD Main Season NVT Sites 2019-2021  
(61 Trials Ranked on Average Site Protein)  
Data Accessed 17/2/22 - [www.grdc-nvt.com.au](http://www.grdc-nvt.com.au)



LRPB Hellfire is a quick-mid spring maturing APH wheat with excellent yield performance and high protein accumulation. Quality testing during development in both the LongReach program and the NVT system has shown that LRPB Hellfire consistently produces protein levels similar to that of Spitfire, with high yields.

This feature makes LRPB Hellfire an important tool for growers looking to take advantage of stack averaging marketing opportunities, such as GrainCorp's Croptimise program, without sacrificing yield across the cropping program.

# Global wheat demand drives innovation benefits for Australian growers

Following a record wheat season in 2020-2021, growers like Ben Taylor have been able reap the rewards of favourable weather and new seed technology, including Pacific Seeds' latest APH release from the LongReach breeding program – Stealth.

"Last year we definitely had an above average winter crop, our wheat output average was 3.3 tonne a hectare, where our average would typically be 2.3 tonnes. We are really happy with the past winter crop season," said Mr Taylor.

"We trialled Stealth on the suggestion of our agronomist, and we were certainly happy to give it a go based on its excellent agronomic and disease package and the anticipated yield advantage.

"It delivered in terms of disease management, which is a major influence in our decision to trial a grain. The four key diseases we want to manage are crown rot, nematodes, yellow spot, and stripe rust.

Stubble cover is important to us and the crop harvested really well with the Stealth, resulting in higher stubble height compared to other shorter structured crops," said Mr Taylor.

"Compared to the previous variety, Lancer, we were told to expect a 3 to 5 per cent yield increase. I was able to harvest over 15 tonne off the 200 kilos that we planted and that'll get planted on a larger commercial scale this year.

"If breeders like Pacific Seeds are breeding new and improved varieties, I'm happy to continue to upgrade – the results you see are fantastic.

"If the varieties like Stealth produce 5 per cent better yields year on year, across a 10-year program that will offer a significant return on investment."

"Winter profiles are now full thanks to amazing March rain, and with planting only weeks away we are assured of very nice planting conditions," said Mr Taylor.



# Variety switch delivers bumper yield

Benn Jenkin, who farms 'Glengarry', a mixed farming enterprise in the Tooraweenah area of central western New South Wales, has had an excellent season after transitioning to Pacific Seeds' Hellfire, with an incredible 12 per cent yield increase in 2020.

"We were looking to replace the Longreach Spitfire for a high protein wheat with quicker maturity, and the Hellfire variety was a pretty clean replacement," Benn said.

Benn and his father have been long term Longreach Spitfire growers for 10 years prior, and have since transitioned into Hellfire in the 2019 and 2020 winter cropping seasons.

The move to Hellfire has fitted well with the farm's mid-season maturity sowing window. With the impressive disease and quality packages of Hellfire, the variety's flexibility has been shown across a range of soil types, particularly in the contrasting seasons of 2019 and 2020.

"In 2021, we have planted all Hellfire, and we certainly prefer it, having a 12% yield increase overall. It was much easier to harvest in general last season, and it was a pretty straight forward variety to grow."

For Benn, the season was almost perfect, despite a dry start and finish and a bit of pressure from mice late in the season.

"We had a slightly dry start, but we had good rain through the winter months, before turning dry again in the spring," Benn said.

After planting 1500 hectares, Benn was pleased to see a huge yield increase and was thrilled to see the final yield result at 4.9t/hectare - noting they would definitely plant Hellfire again. Benn intends Hellfire to make up a fair proportion of his cereal rotation moving forward.





LongReach

# RELIANT

Now Free to Trade

Please complete the grower sales declaration form available from the Pacific Seeds website

APH (NNSW/Qld) and AH (SNSW) with similar planting window to Suntop  
Mid-season maturity, yield performance is best when planted in the main season window  
A reliable grain package with good grain size and test weight, as well as showing lower screenings than Suntop  
Reliant is a Gregory/Crusader cross, it has the tillering habit of Gregory and the tightly packed heads of Crusader  
Good resistance to Stem Rust (R), Leaf Rust (RMR), Stripe Rust East (MR)  
Shorter canopy height with good resistance to lodging  
Performs well under crown rot pressure (MS) and leading tolerance to RLN (T-MT)

---

LongReach

# FLANKER

Now Free to Trade

Please complete the grower sales declaration form available from the Pacific Seeds website

A high yielding variety suited to NSW and Qld  
Mid-late maturity with similar plasticity to EGA Gregory  
APH classification in Northern Zone and South Eastern Zone  
Good level of resistance to Stripe Rust East (RMR), Stem Rust (RMR) and Leaf Rust (RMR/MSS)  
A reliable grain package, good test weights with sound grain size  
Flanker is taller than Gregory and is suited to dryland rather than irrigation production

---

LongReach

# LANCER

Now Free to Trade

Please complete the grower sales declaration form available from the Pacific Seeds website

A mid to late maturing line which is responsive to temperature  
APH classification in Northern and South Eastern Zones (All NSW and Qld)  
Excellent grain package with good protein delivery, good grain size and low screenings  
Solid Stripe Rust resistance package based on Adult Plant Resistance (RMR East), very good resistance to Stem (R) and Leaf rust (RMR/MRMS)  
Shorter canopy height with good resistance to lodging  
Performs well under crown rot pressure (MSS) and leading tolerance to RLN (TMT)

LongReach

# MUSTANG

Now Free to Trade

Please complete the grower sales declaration form available from the Pacific Seeds website

APH (NSW/Qld) to suit all main season growing areas

Quick maturity for main season planting like Spitfire

Has shown an average yield increase over Spitfire of 11% in 61 LongReach QLD/NSW trials over 7 years

Outstanding shorter canopy to make on farm management and stubble handling easier

Excellent major gene Stripe Rust resistance (RMR)

Has coped well with Crown Rot (MSS) and RLN (MTMI) in tough seasons in the north





# KITTYHAWK

## VARIETY ATTRIBUTES

A high yielding dual purpose wheat variety suited to all areas that grow Wedgetail

Premium classification; APH (NSW/Qld) and AH (SA/Vic)

Slow maturity (long season) with three winter genes. Suited to early planting similar to Wedgetail

Improved disease resistance over Wedgetail especially for Stripe Rust East (MR) Stem Rust (MRMS(S)) and Leaf Rust (MR)

Significant test weight (4-6Kg/Hl) improvement over Wedgetail and Illabo with a solid grain package

### Now Free to Trade

Please complete the grower sales declaration form available from the Pacific Seeds website

### DISEASE RESISTANCE

Stem Rust	MRMS(S)
Leaf Rust	MR
Stripe Rust East	MR
Yellow Spot	MRMS
Septoria tritici	MRMS
Crown Rot	SVS
Prat.thornei	Res S
Prat.thornei	Tol I
Prat.neglectus	Res S
Prat.neglectus	Tol MTMI
Black Point	MRMS

S=Moderately Susceptible, MR=Moderately Resistant  
R =Resistant. Tol Rating - T=Tolerant, MT=Moderately Tolerant  
MI=Moderately Intolerant, I=Intolerant, VI=Very Intolerant.  
Varieties with # indicate susceptibility to pathotype variant.  
Ratings with \* indicate sourced from LRPB Disease Nurseries results. Data sourced via NVT ([www.nvtonline.com.au](http://www.nvtonline.com.au)) and LRPB Disease Screening Results Feb 2022. p=Preliminary Data Based on limited data set



Pete Harris, mixed farmer "Rowena", Molong in central west NSW grows Kittyhawk as his dual- purpose wheat.

"Kittyhawk continues to do the job for us with both autumn and winter grazing and grain recovery in the spring, summer"



## VARIETY ATTRIBUTES

A slow maturing Spring wheat with a unique set of maturity holds that allows it to be planted earlier in areas that don't suit the traditional winter wheat types

AH classification in South East Zone

High tiller number and semi prostrate early growth habit which may aid as part of an integrated weed management solution

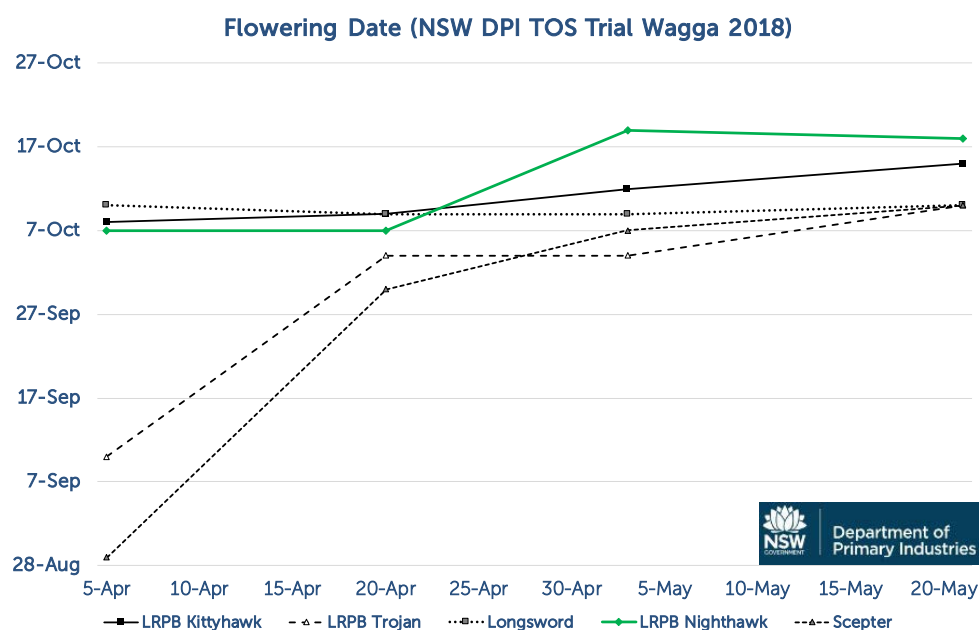
Medium tall in height with good standability in high production situations

DISEASE RESISTANCE		
Stem Rust		RMR
Leaf Rust		MSS
Stripe Rust East		MRMS
Yellow Spot		MS
Septoria tritici		MS
Crown Rot		MSS
Prat.thornei	Res	MS
Prat.thornei	Tol	MII
Prat.neglectus	Res	MSS
Prat.neglectus	Tol	IVI
Black Point		MS

S=Moderately Susceptible, MR=Moderately Resistant  
R =Resistant. Tol Rating - T=Tolerant, MT=Moderately Tolerant  
MI=Moderately Intolerant, I=Intolerant, VI=Very Intolerant.  
Varieties with # indicate susceptibility to pathotype variant.  
Ratings with \* indicate sourced from LRPB Disease Nurseries results. Data sourced via NVT ([www.nvtonline.com.au](http://www.nvtonline.com.au)) and LRPB Disease Screening Results Feb 2022. p=Preliminary Data  
Based on limited data set

## AGRONOMIC FEATURES

LongReach Plant Breeders phenology studies show that LRPB Nighthawk has the strong photoperiod controls of a "Very Slow Spring Wheat" this has been confirmed through the GRDC MESW project. LRPB Nighthawk has an early growth habit similar to dual purpose Winter wheats like LRPB Kittyhawk, but it can break the vegetative cycle earlier in Spring than LRPB Kittyhawk. LRPB Nighthawk is an option that opens the seeding window earlier in main season environments to capitalise on early break years.



# Wheat Suggested Sowing Timetables Queensland

QUEENSLAND District		Varieties	Planting time by weeks															
			April				May				June				July			
			1	2	3	4	1	2	3	4	1	2	3	4	1	2	3	4
Central Highlands	LRPB Raider	E	C	C	C	C	C	L	L									
	EGA Gregory, LRPB Flanker, LRPB Lancer, LRPB Stealth	E	E	C	C	C	C	C	C	L								
	LRPB Reliant		E	E	E	E	C	C	C	C	C	C	C	L	L			
	LRPB Spitfire, LRPB Mustang, LRPB Hellfire		E	E	E	E	C	C	C	C	C	C	C	L	L			
Dawson Callide Low Frost risk (higher slopes or more Northern areas)	LRPB Raider	E	E	C	C	C	C	L	L									
	EGA Gregory, LRPB Flanker, LRPB Lancer, LRPB Stealth		E	E	E	C	C	C	C	C	L							
	LRPB Reliant					E	E	C	C	C	C	C	L	L				
	LRPB Spitfire, LRPB Mustang, LRPB Hellfire					E	E	C	C	C	C	C	C	L	L			
Central Highlands	LRPB Raider																	
	EGA Gregory, LRPB Flanker, LRPB Lancer, LRPB Stealth			E	E	C	C	C	C	C	L							
	LRPB Reliant					E	E	C	C	C	C	C	L	L				
	LRPB Spitfire, LRPB Mustang, LRPB Hellfire					E	E	C	C	C	C	C	C	L	L			
Dawson Callide High Frost risk (river flats or areas known to be more frost prone)	LRPB Raider																	
	EGA Gregory, LRPB Flanker, LRPB Lancer, LRPB Stealth																	
	LRPB Reliant																	
	LRPB Spitfire, LRPB Mustang, LRPB Hellfire																	
Maranoa, Balonne Western Downs - South West	LRPB Raider		E	E	C	C	C	C	L	L								
	EGA Gregory, LRPB Flanker, LRPB Lancer, LRPB Stealth			E	E	C	C	C	C	C	L							
	LRPB Reliant					E	E	C	C	C	C	C	L	L				
	LRPB Spitfire, LRPB Mustang, LRPB Hellfire					E	E	C	C	C	C	C	C	L	L			
Darling Downs (Northern, uplands)	LRPB Raider				E	E	C	C	L	L								
	EGA Gregory, LRPB Flanker, LRPB Lancer, LRPB Stealth					E	C	C	C	L								
	LRPB Reliant																	
	LRPB Spitfire, LRPB Mustang, LRPB Hellfire																	
Darling Downs High frost risk (Central, Southern)	LRPB Raider						E	E	C	C	C	L	L					
	EGA Gregory, LRPB Flanker, LRPB Lancer, LRPB Stealth								E	C	C	C	L					
	LRPB Reliant								E	E	C	C	C	C	L	L		
	LRPB Spitfire, LRPB Mustang, LRPB Hellfire								E	E	C	C	C	C	C	L	L	
Central Burnett South Burnett & West Moreton	LRPB Raider				E	E	C	C	C	L	L							
	EGA Gregory, LRPB Flanker, LRPB Lancer, LRPB Stealth					E	E	C	C	C	C	L						
	LRPB Reliant						E	E	C	C	C	C	C	L	L			
	LRPB Spitfire, LRPB Mustang, LRPB Hellfire								E	E	C	C	C	C	C	L	L	

# Wheat Suggested Sowing Timetables New South Sales

NORTHERN NSW District	Varieties	Planting time by weeks															
		March				April				May				June			
		1	2	3	4	1	2	3	4	1	2	3	4	1	2	3	4
Slopes	LRPB Kittyhawk, EGA Wedgetail		E	E	C	C	C	C	C	C	L						
	LRPB Raider						E	C	C	C	C	L	L				
	LRPB Lancer, LRPB Stealth							E	C	C	C	C	L				
	EGA Gregory, LRPB Flanker								E	C	C	C	L				
	LRPB Impala, LRPB Oryx, LRPB Reliant									E	C	C	C	C	L		
Plains	LRPB Hellfire, LRPB Spitfire, LRPB Mustang									E	C	C	C	C	C	L	L
	LRPB Kittyhawk, EGA Wedgetail			E	E	C	C	C	C	L							
	LRPB Raider					E	E	C	C	C	C	L					
	EGA Gregory, LRPB Flanker, LRPB Lancer, LRPB Stealth							E	C	C	C	C	L				
	LRPB Impala, LRPB Oryx, LRPB Reliant								E	C	C	C	C	L			
	LRPB Hellfire, LRPB Spitfire, LRPB Mustang									E	C	C	C	C	C	L	L

SOUTHERN NSW District	Varieties	Planting time by weeks															
		March				April				May				June			
		1	2	3	4	1	2	3	4	1	2	3	4	1	2	3	4
Slopes	LRPB Kittyhawk, EGA Wedgetail		E	E	C	C	C	C	C	L							
	LRPB Nighthawk			E	E	C	C	C	C	C	L						
	LRPB Raider					E	E	C	C	C	C	L	L				
	LRPB Lancer, LRPB Stealth						E	C	C	C	L						
	EGA Gregory, LRPB Flanker							E	C	C	C	C	L				
	LRPB Impala, LRPB Oryx, LRPB Reliant								E	C	C	C	C	L			
	LRPB Hellfire, LRPB Spitfire, LRPB Mustang									E	C	C	C	C	C	L	L
Plains	LRPB Kittyhawk, EGA Wedgetail			E	E	C	C	C	C	L							
	LRPB Nighthawk				E	C	C	C	C	L							
	LRPB Raider					E	E	C	C	C	C	L	L				
	LRPB Lancer, LRPB Stealth						E	C	C	C	C	L					
	EGA Gregory, LRPB Flanker							E	C	C	C	C	L				
	LRPB Impala, LRPB Oryx, LRPB Reliant									E	C	C	C	C	L		
	LRPB Hellfire, LRPB Spitfire, LRPB Mustang										E	C	C	C	C	L	L
	LRPB Kittyhawk, EGA Wedgetail			E	E	C	C	C	C	L							
	LRPB Nighthawk				E	C	C	C	C	L							
	LRPB Raider					E	E	C	C	C	C	L	L				
	LRPB Lancer, LRPB Stealth						E	C	C	C	C	L					
	EGA Gregory, LRPB Flanker							E	C	C	C	C	L				
	LRPB Impala, LRPB Oryx, LRPB Reliant									E	C	C	C	C	L		
	LRPB Hellfire, LRPB Spitfire, LRPB Mustang										E	C	C	C	C	L	L

EARLY	CONVENTIONAL	LATE
-------	--------------	------





EXCELLENT NUTRITION

SEASON LONG FEED

HIGH DRY MATTER PRODUCTION

PROVEN RELIABILITY

## Proven productivity, all season long.

There's no taking chances on your livestock's wellbeing through Autumn and Winter, which is why Pacific Seeds' grazing oats have remained a staple through the years. Our varieties have proven their quality and reliability time and time again, delivering the palatability, nutrition and growth necessary to ensure your animals stay as healthy as possible.



Scan the QR Code to access the Pacific Seeds Grazing Oats Guide for agronomy advice to help maximise your crop performance.





# COMET

## ATTRIBUTES

### Key features

- Semi erect variety with leaf rust resistance
- Ideal for early plantings for high quality autumn feed
- It will maintain vegetative growth well into late spring
- Ideal companion to Drover to complete your oats program
- Suitable for grazing and hay production
- High dry matter production under dryland and irrigated conditions
- Establishes in warmer soils (up to 28°C) more readily than other varieties

### Plant type

Comet is a semi erect forage oats variety providing quick early feed. Under favourable growing conditions Comet will produce for multiple grazings.

### Grazing management

Comet is ideally suited to cattle, particularly in a continuous grazing situation. For best results in a rotational grazing system it should not be grazed below the growing point located just above the highest node. Heavy grazing will result in poor regrowth. However, frequent grazing will help crop performance and minimise leaf rust development.

### Soil temperature requirement

A major factor affecting the successful germination and establishment of oats is soil temperature. With early autumn sowing, warm soil may prevent seed from germinating. Laboratory tests and field experience have shown effective germination and establishment with maximum soil temperatures up to 28°C.

### Dryland planting rates

CQ & Western Qld	25-40 kg/ha
Southern Qld	40-60 kg/ha
N & C NSW	40-60 kg/ha
S NSW & Vic	60-80 kg/ha

## QUICK START QUALITY FEED

Maturity	Late
Plant Type	Semi-Erect
Leaf rust reaction	Resistant <sup>#</sup>
Time to first grazing	Medium - Quick
Don't graze below	10 - 15cm
Early winter feed	****
Winter Feed	***
Spring Feed	****
Grazing - Cattle	Very Good
- Sheep	Good
- Horses	Very Good

<sup>#</sup>Pathotype dependent



Bill Smith, Melvin Mengel and Joshua Mengel cutting an oats trial  
Kia-Ora Nobby

# DROVER

KEEPS 'EM IN WINTER AND SPRING FEED

## ATTRIBUTES

In replicated cutting trials Drover has shown slightly lower dry matter yields than Taipan in the initial growth but higher yield through the winter months.

### Key features

- Intermediate growth habit
- Produces large quantities of winter feed
- Will remain vegetative into late spring
- High dry matter production
- Good choice for grazing and hay
- Good warm soil emergence (up to 28°C)

### Background

Drover was selected for its high level of dry matter production and regrowth ability.

### Plant type

Drover is a grazing oat with very good post grazing recovery. It has an intermediate growth habit similar to that of Warrego. Drover also has relatively low growing points which makes it suitable for high stocking rates for all classes of livestock.

### Leaf rust resistance

Drover is now susceptible to the current races of leaf rust. However, good grazing or cutting management will reduce the impacts of leaf rust. Wider row spacings of at least 45cm will also minimise the effects of rust.

### Grazing management

Drover is suitable for all classes of livestock, hay or silage production. For best regrowth do not graze below the growing point located just above the highest node.

### Dryland planting rates

CQ & Western Qld	25-40 kg/ha
Southern Qld	40-60 kg/ha
N & C NSW	40-60 kg/ha
S NSW & Vic	60-80 kg/ha

Maturity	Medium-late
Plant Type	Intermediate
Leaf rust reaction	Susceptible
Time to first grazing	Medium
Don't graze below	10 - 15cm
Early winter feed	***
Winter Feed	****
Spring Feed	****
Grazing - Cattle	Very Good
- Sheep	Good
- Horses	Very Good



Melvin Mengel Kia-Ora Nobby impressed with the bulk of Drover Oats



# INTRODUCING

# RAPTOR

## KEY FEATURES

- Semi-erect variety with moderate resistance to all current leaf rust pathotypes
- Much earlier maturity compared to current commercial varieties
- Excellent early growth with high dry matter yields (10% > Comet)
- Broad planting window opportunity due to quick growth
- High total dry matter production (= Comet)
- Establishes in warmer soils (up to 28°C)

**Commercially Available 2023**



Maturity	Early
Plant Type	Semi-Erect
Leaf rust reaction	Moderately Resistant
Time to first grazing	Quick
Don't graze below	10 - 15cm
Early winter feed	*****
Winter Feed	****
Spring Feed	***
Grazing - Cattle	Very Good
- Sheep	Good
- Horses	Very Good

# SABRE

## KEY FEATURES

- Intermediate growth habit with complete leaf rust resistance to all current leaf rust pathotypes
- Ideal for early plantings for high quality autumn feed
- Very good early growth with high dry matter yields (10% > Drover)
- Will remain vegetative into late spring
- High total dry matter production (= Drover)
- Establishes in warmer soils (up to 28°C)

**Commercially Available 2023**



Maturity	Late
Plant Type	Intermediate
Leaf rust reaction	Resistant
Time to first grazing	Medium - Quick
Don't graze below	10 - 15cm
Early winter feed	****
Winter Feed	***
Spring Feed	****
Grazing - Cattle	Very Good
- Sheep	Good
- Horses	Very Good

FOR CURRENT INFORMATION ON PACIFIC SEEDS WHEAT AND  
OATS, CONTACT TOOWOOMBA HEAD OFFICE ON (07) 4690 2666  
OR VISIT US ONLINE AT [PACIFICSEEDS.COM.AU](http://PACIFICSEEDS.COM.AU)

## ASSOCIATES NETWORK

Pacific Seeds wheat and oat varieties are available through our Associate Network.  
Scan the QR Code for access to the full Associates Network List or visit the website.  
[www.pacificseeds.com.au/wheat-and-oats-associates](http://www.pacificseeds.com.au/wheat-and-oats-associates)



# Pacific Seeds™

Growing possibilities

[pacificseeds.com.au](http://pacificseeds.com.au)



### PLANT BREEDERS RIGHTS

Pacific Seeds Wheat & Oat varieties are protected by Plant Breeders Rights (PBR). In regard to propagating material (planting seed) of this variety, any unauthorised commercial production or reproduction, conditioning for propagation, offering for sale, sale, import, export or stocking of propagating material is an infringement under the *Plant Breeders Rights Act 1994*.

### End Point Royalty (EPR) Wheat

Each time a grower purchases Pacific Seeds wheat seed, the grower agrees to comply with the Variety Licence and Royalty Agreement, including agreement to pay the EPR. EPR is payable on all grain production, except on seed retained by the grower for replanting by the grower. The majority of the EPR will be paid by Advanta Seeds to the Breeder (LongReach Plant Breeders) for investment in future wheat breeding programs.

The information provided in this publication is intended as a guide only. Advanta Seeds Pty Ltd ('Advanta Seeds') (including its officers, employees, contractors and agents) can not guarantee that every statement is without flaw of any kind. While Advanta Seeds has taken all due care to ensure that the information provided is accurate at the time of publication, various factors, including planting times and environmental conditions may alter the characteristics and performance from plants. Advanta Seeds shall not be liable for any errors or omissions in the information or for any loss, injury, damage or other consequence whatsoever that you or any person might incur as a result of your use of or reliance upon the products (whether Advanta Seeds products or otherwise) and information which appear in this publication. To the maximum extent permitted by law, the liability of Advanta Seeds for any claim whatsoever arising out of the supply or use of or reliance upon the products and information in this publication (including liability for breach of any condition or warranty implied by the *Trade Practices Act 1974* or any other law) is limited at its discretion, to the replacement of the products, the supply of equivalent products or the resupply of the publication. For application to specific conditions, seek further advice from a local professional.  
© Advanta Seeds 2022.